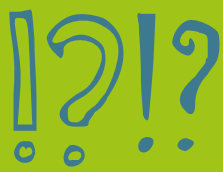


Actually Education



What can we not see?

The behaviour that we see exhibited by children is only a small part of the puzzle - we need to consider what's going on beneath the surface to understand what's going on.



Unpredictability
or change



Fear



Anxiety



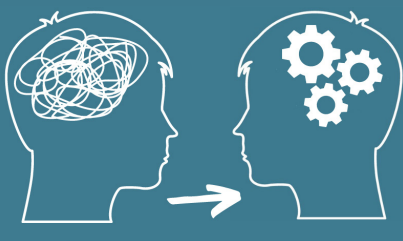
Sensory
over-stimulation



Environment



Struggling but
can't ask for help



Actually Education

Every Child Actually Matters

actuallyeducation.com